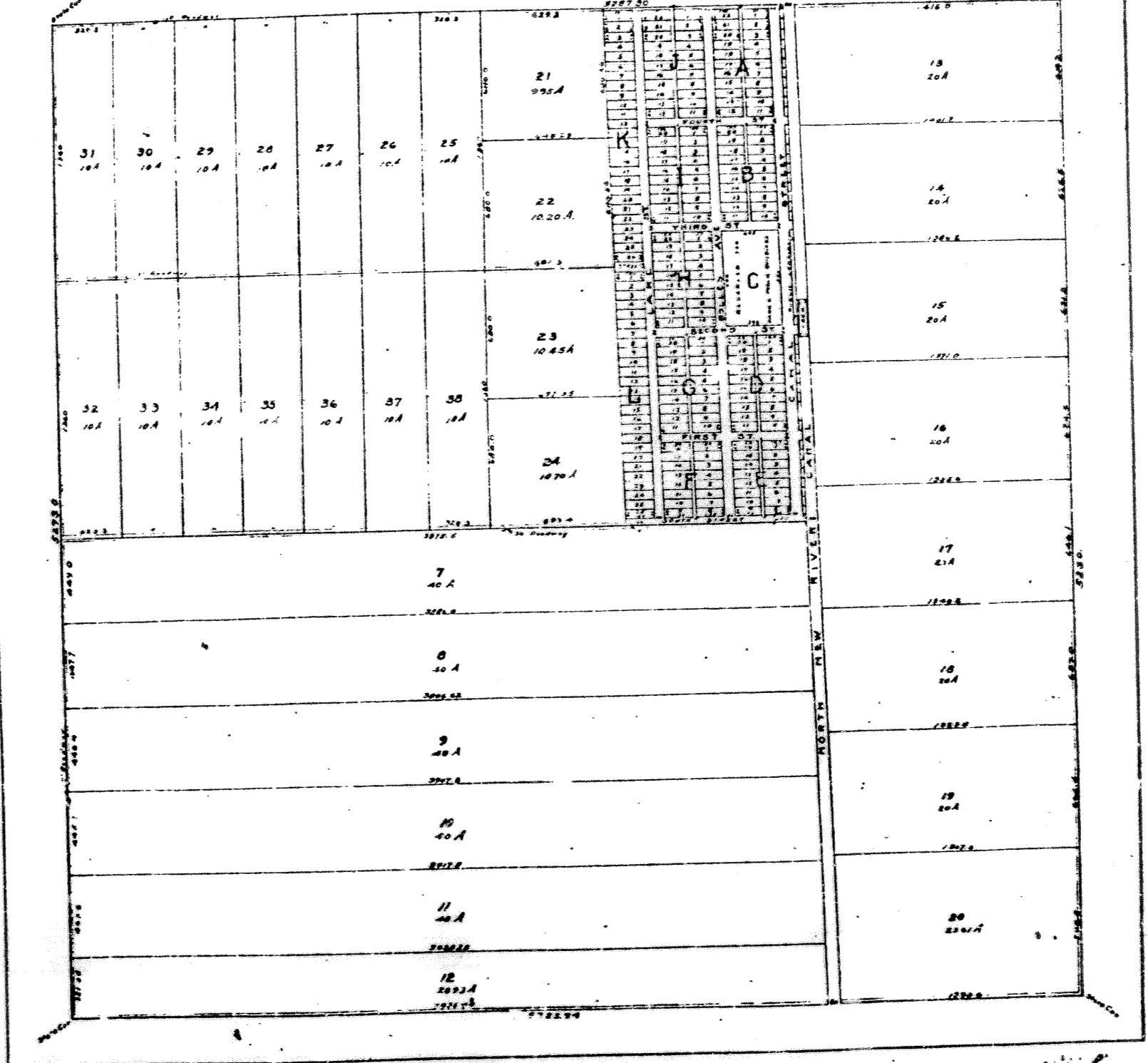


AMENDED PLAT
 AND
 RE-SUBDIVISION OF
 SECTION 14-T.44S, R.36E, PALM BEACH CO
 AND
 PLAT OF THE TOWN OF
 SOUTH BAY
 THE FLORIDA STATE DRAINAGE LAND CO

EVERGLADES ENGINEERING CO
 ST. LAURELDALE, FLA.
 SURVEYED AUG 1917 PLAT FILE 1-1
 TRANSFER 2388 PLAT FILE 1-1
 DRAWN BY J.S.B. BOOK FILE 1-1
 CHECKED BY D.T.C. SCALE 1"=100'



STATE OF FLORIDA
 County of Palm Beach
 I, *[Signature]*, Secretary of the Florida State Drainage Land Company, do hereby certify that the above is a true and correct copy of the original plat as filed in the office of the State Engineer, and that the same is subject to the provisions of the law of Florida, Chapter 100, as amended, and that the same is subject to the provisions of the law of Florida, Chapter 100, as amended, and that the same is subject to the provisions of the law of Florida, Chapter 100, as amended.

[Signature]
 Secretary

STATE OF FLORIDA
 County of Palm Beach
 I, *[Signature]*, Secretary of the Florida State Drainage Land Company, do hereby certify that the above is a true and correct copy of the original plat as filed in the office of the State Engineer, and that the same is subject to the provisions of the law of Florida, Chapter 100, as amended, and that the same is subject to the provisions of the law of Florida, Chapter 100, as amended, and that the same is subject to the provisions of the law of Florida, Chapter 100, as amended.

[Signature]
 Secretary

058-000